



**Engine**  
**Rated Power**  
**Blade Width**  
**Maximum Speed**  
**Draw Bar Pull**  
**Operating Weight**

YN38GBZ2  
75 kW @ 2,400 rpm  
3,050 mm  
38 km/h  
39 kN  
7,500 kg

# 4120D MOTOR GRADER

TOUGH WORLD. TOUGH EQUIPMENT.

# 4120D SPECIFICATIONS >>>

## ENGINE

Emission Regulation	Tier 2
Manufacturer	YUNNEI POWER
Model	YN38GBZ2
Rated Power	75 kw @ 2,400 rpm
Maximum Torque	332 N.m
Number of Cylinders	4
Aspiration	Turbo & air-to-air intercooled

## TRANSMISSION

Transmission Type	Power shift
Maximum Travel Speed, fwd	38 km/h
Maximum Travel Speed, rev	38 km/h
Number of Speeds, fwd	4
Number of Speeds, rev	4

## AXLES

Differential Type	Limited slip standard
Axle Oscillation	± 15°

## STEERING

Steering Configuration	Load sensor steering gear
Steering Relief Pressure	14.8 MPa
Minimum Turning Radius	6,000 mm
Steering Angle	± 48°
Frame Articulation Angle	± 27°

## BRAKES

Service Brake Type	Disc brake
Service Brake Location	Rear axle

## TIRES

Tire Size	16/70-24
-----------	----------

## HYDRAULIC SYSTEM

Main Pump Type	Gear
Main Relief Pressure	16 MPa
Main Pump Flow	80 L/min

## WORKING CAPACITIES

Maximum Draw Pull	39 kN
Cutting Pressure	6,000 kg

## MOLDBOARD PERFORMANCE

Bank Cut Angle	28~74°
Moldboard Lift Above Ground	450 mm
Moldboard Side Shift, left/right	410 / 480 mm
Maximum Sloping Angle	35°
Cutting Depth	350 mm
Circle Rotation	120°
Circle Diameter	1,265 mm

## DIMENSIONS

Wheelbase	5,135 mm
Overall Length	8,020 mm
Overall Width	2,090 mm
Overall Height with Cab	3,150 mm
Clearance under Front Axle	465 mm
Moldboard Standard Length	3,050 mm
Moldboard Standard Thickness	19 mm
Moldboard Standard Height	450 mm

## OPERATING WEIGHTS

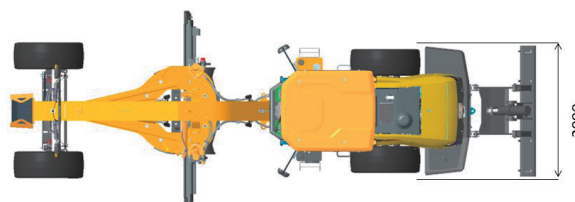
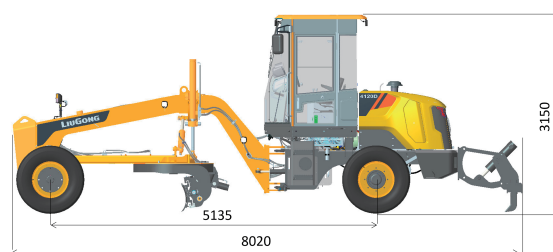
Operating Weight	7,500 kg
------------------	----------

## SERVICE CAPACITIES

Fuel Tank	88 L
Engine Oil	6.8 L
Cooling System	15 L
Hydraulic Reservoir	75 L
Transmission and Torque Converter	27 L

## OPTIONAL EQUIPMENT

Oil-Fired Warm Air Heater
Rearview Camera
Blade Float



### Guangxi Liugong Machinery Co., Ltd.

No. 1 Liutai Road, Liuzhou, Guangxi 545007, PR China  
T: +86 772 3886124 E: overseas@liugong.com  
www.liugong.com

Specifications and designs are subject to change without notice. Machines shown may include optional equipment. Liugong standard and optional equipment may vary from region to region. Please consult your Liugong dealer for information specific to your area. Engine power kW is converted to horsepower (1 kW=1.3596 ps and 1 kW=1.3410 hp) in this file.

12/2024 Designed by Liugong  
Replace the previous versions of 01/2024