



Engine	Cummins B6.7
Rated Power	120 kW (161 hp / 163 ps) @ 2,200 rpm
Operating Weight	15,100 kg (33,290 lbs)
Standard Bucket Size	2.3 m ³ (3.0 yd ³)
Standard Breakout Force	128 kN (28,776 lbf)
Standard Dump Clearance	2,826 mm (9'3")

842T WHEEL LOADER

TOUGH WORLD. TOUGH EQUIPMENT.

ENGINE

Emission Regulation	EU Stage V
Manufacturer	Cummins
Model	B6.7
Rated Power	120 kW (161 hp / 163 ps) @ 2,200 rpm
Peak Torque	881 N·m (650 lbf·ft) @ 1,300 rpm
Displacement	6.7 L (1.8 gal)
Number of Cylinders	6
Aspiration	Turbocharged & Air-to-air intercooled

TRANSMISSION

Transmission Type	Countershaft, power shift
Torque Converter	Single stage, three elements
Maximum Travel Speed, fwd	44.4 km/h (27.6 mph)
	46 km/h (Lock up) (28.6 mph) (Lock up)
Maximum Travel Speed, rev	32.12 km/h (20 mph)
Number of Speed, fwd	5
Number of Speed, rev	3

AXLES

Differential Front Type	Differential lock
Differential Rear Type	Conventional
Axle Oscillation	±12°

STEERING

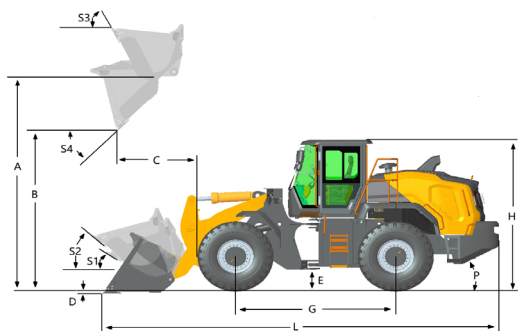
Steering Hydraulic System	Large displacement steering
Steering Relief Pressure	22 MPa (3,191 psi)

BRAKES

Service Brake Type	Wet discs brake
Service Brake Actuation	Full hydraulic
Parking Brake Type	Caliper discs brake
Parking Brake Actuation	Electro-hydraulic release

HYDRAULIC SYSTEM

Main Pump Type	Piston
Main Relief Pressure	28 MPa (4,061 psi)
Raise	5.1 s
Dump Time	1.6 s
Float Down Time	3.3 s
Hydraulic Cycle Time	10 s



LOADER ARM PERFORMANCE WITH STANDARD BUCKET 2.3 m³ (3.0 yd³)

Tipping Load - Straight (ISO 14397-1:2007)	9,700 kg (21,385 lbs)
Tipping Load - Full Turn (ISO 14397-1:2007)	8,400 kg (18,519 lbs)
Bucket Breakout Force	128 kN (28,776 lbf)
A Maximum Hinge Pin Height	3,998 mm (13'1")
B Dump Clearance at Full Height Discharge	2,826 mm (9'3")
C Dump Reach at Full Height Discharge	1,170 mm (3'10")
D Maximum Digging Depth, Bucket Level	135 mm (5")
S ₁ Rollback at Ground Level	42 °
S ₂ Bucket Rollback at Carry	47 °
S ₃ Bucket Rollback at Maximum Height	63 °
S ₄ Maximum Dump Angle at Full Height	45 °

BUCKET PERFORMANCE

Reference Bucket	2.1 - 4.0 m³ (2.7 - 5.2 yd³)
------------------	------------------------------

DIMENSIONS

E Ground Clearance	432 mm (1'5")
G Wheelbase	3,000 mm (9'10")
H Cab Height	3,382 mm (11'1")
J Wheel Tread	1,950 mm (6'5")
K Width over Tires	2,470 mm (8'1")
L Length with Bucket Down	7,878 mm (25'10")
M Turn Angle, Either Side	40 °
P Rear Angle of Departure	27 °
R ₁ Turning Radius, Bucket Carry	6,129 mm (20'1")
R ₂ Turning Radius, Outside of Tire	5,395 mm (17'8")
W Width over Bucket	2,700 mm (8'10")

TIRES

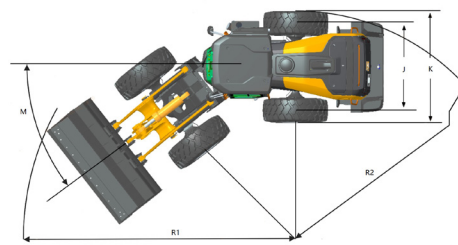
Tire Size	20.5R25
-----------	---------

OPERATING WEIGHTS

Operating Weight	15,100 kg (33,290 lbs)
------------------	------------------------

SERVICE CAPACITY

Fuel Tank	240 L (63.4 gal)
Engine Oil	20 L (5.3 gal)
Aftertreatment DEF	25 L (6.6 gal)
Cooling System	44 L (11.6 gal)
Hydraulic System	154 L (41 gal)
Transmission and Torque Converter	40 L (10.6 gal)
Axles, Each	33 L (8.7 gal)



Guangxi Liugong Machinery Co., Ltd.

No. 1 Liutai Road, Liuzhou, Guangxi 545007, PR China

T: +86 772 3886124

E: overseas@liugong.com

www.liugong.com

Specifications and designs are subject to change without notice. Machines shown may include optional equipment. Liugong standard and optional equipment may vary from region to region. Please consult your Liugong dealer for information specific to your area. Engine power kW is converted to horsepower (1 kW=1.3596 ps and 1 kW=1.3410 hp) in this file.

04/2025 Designed by LiuGong
Replace the previous versions of 03/2025