



**Engine**

**Max. Gross**

Cummins X12  
287 kW (385 hp / 390 ps) @ 1,800 rpm

**Max. Net**

273 kW (366 hp / 371 ps) @ 1,800 rpm

**Operating Weight**

31,750 kg

**Standard Bucket Size**

5.4 m<sup>3</sup>

**Standard Breakout Force**

270 kN

**Standard Dump Clearance**

3,332 mm

# 890T WHEEL LOADER

# 890T SPECIFICATIONS >>>

## ENGINE

Emission Regulation	EU Stage V
Manufacturer	Cummins
Model	X12
Max. Gross	287 kW (385 hp / 390 ps) @ 1,800 rpm
Max. Net	273 kW (366 hp / 371 ps) @ 1,800 rpm
Peak Torque	1,862 N·m @ 1,400 rpm
Displacement	11.8 L
Number of Cylinders	6
Aspiration	Turbocharged & Air-to-air intercooled

## TRANSMISSION

Transmission Type	Countershaft, power shift
Torque Converter	Single stage, three elements
Maximum Travel Speed, fwd	41.9 km/h
Maximum Travel Speed, rev	27.3 km/h
Number of Speed, fwd	5
Number of Speed, rev	3

## AXLES

Differential Front Type	100% differential lock
Differential Rear Type	Conventional
Axle Oscillation	±11°

## STEERING

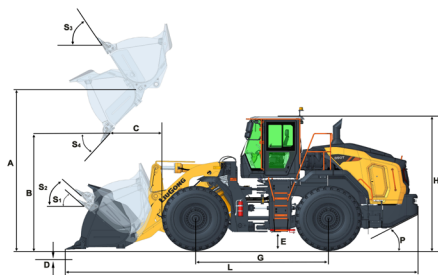
Steering Hydraulic System	Load sensing steering
Steering Relief Pressure	25 MPa

## BRAKES

Service Brake Type	Wet discs brake
Service Brake Actuation	Full hydraulic
Parking Brake Type	Caliper discs brake
Parking Brake Actuation	Electro-hydraulic release

## HYDRAULIC SYSTEM

Main Pump Type	Piston
Main Relief Pressure	31.5 MPa
Raise	6.0 s
Dump Time	1.6 s
Float Down Time	3.4 s
Hydraulic Cycle Time	11 s



## LOADER ARM PERFORMANCE WITH STANDARD BUCKET 5.4 m³

Tipping Load - Straight (ISO 14397-1:2007)	24,600 kg
Tipping Load - Full Turn (ISO 14397-1:2007)	21,150 kg
Bucket Breakout Force	270 kN
A Maximum Hinge Pin Height	4,609 mm
B Dump Clearance at Full Height Discharge	3,332 mm
C Dump Reach at Full Height Discharge	1,433 mm
D Maximum Digging Depth, Bucket Level	127 mm
S <sub>1</sub> Rollback at Ground Level	45°
S <sub>2</sub> Bucket Rollback at Carry	49°
S <sub>3</sub> Bucket Rollback at Maximum Height	60°
S <sub>4</sub> Maximum Dump Angle at Full Height	45°

## BUCKET PERFORMANCE

Reference Bucket	4.0-9.0 m³
------------------	------------

## DIMENSIONS

E Ground Clearance	442 mm
G Wheelbase	3,700 mm
H Cab Height	3,790 mm
J Wheel Tread	2,420 mm
K Width over Tires	3,170 mm
L Length with Bucket Down	9,637 mm
M Turn Angle, Either Side	38°
P Rear Angle of Departure	25°
R <sub>1</sub> Turning Radius, Bucket Carry	7,832 mm
R <sub>2</sub> Turning Radius, Outside of Tire	6,958 mm
W Width over Bucket	3,532 mm

## TIRES

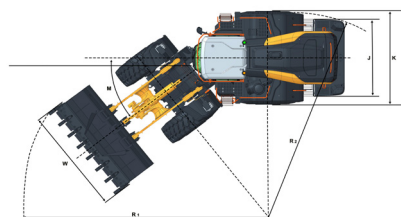
Tire Size	29.5R25
-----------	---------

## OPERATING WEIGHTS

Operating Weight	31,750 kg
------------------	-----------

## SERVICE CAPACITY

Fuel Tank	459 L
Engine Oil	35 L
Cooling System	52 L
DEF Tank	50 L
Hydraulic System	343 L
Transmission and Torque Converter	62 L
Axles, Front/Rear	60 L / 60 L



### Guangxi Liugong Machinery Co., Ltd.

No. 1 Liutai Road, Liuzhou, Guangxi 545007, PR China  
T: +86 772 3886124 E: overseas@liugong.com  
www.liugong.com

Specifications and designs are subject to change without notice. Machines shown may include optional equipment. Liugong standard and optional equipment may vary from region to region. Please consult your Liugong dealer for information specific to your area. Engine power kW is converted to horsepower (1 kW=1.3596 ps and 1 kW=1.3410 hp) in this file.

11/2025 Designed by LiuGong  
Replace the previous version of 10/2025